

Trimvent® 90 Hi Lift

High performance aluminium slot ventilator



Trimvent® 90 Hi Lift Ventilator

Suitable for:

PVCu



ALUMINIUM



TIMBER



Trimvent 90 Hi Lift is a semi-recessed aluminium slot ventilator that fits over a 16mm slot in a window and provides an Equivalent Area (EA) of up to 8600mm² when fitted with the Hi Flow canopy. The TV90 Hi Lift is ideal for both new build or refurbished situations using any window material, and is also available in a variety of colours.

The Hi Lift design improves the Trimvent range to offer increased ventilation. It gives optimum airflow (and therefore EA) utilising existing Trimvent slot sizes and vent lengths, making them 60% more efficient than previous models.

It has been specifically developed for recent revisions to Part F of the Building Regulations for Ventilation (England & Wales), is optimised for use with the Scottish Technical Standards and to improve performance for requirements throughout the UK and Europe.

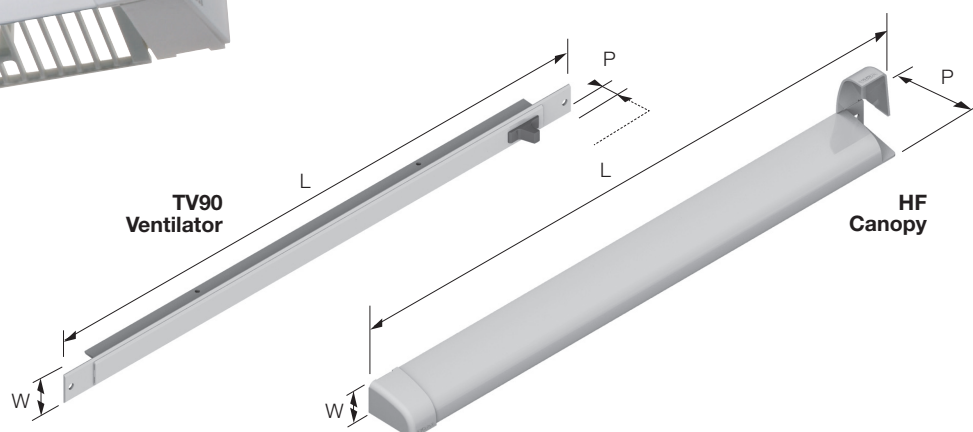
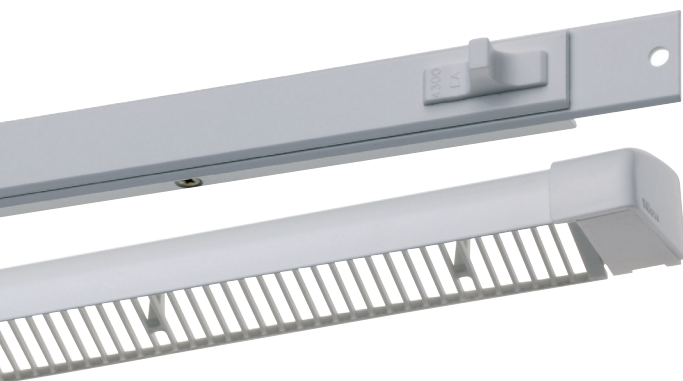
The Trimvent 90 range of ventilators has been specified and fitted on to millions of windows throughout the UK and mainland Europe over the last 35 years.



Trimvent® 90 Hi Flow Canopy

Features and Benefits

- Upgraded design to improve performance and Regulations compliance
- T-bar deflects air up and down
- Compression closing action
- For use on 16mm slot
- Based on successful Trimvent® principle
- Unique linkages ensure constant friction and smooth action
- Canopy features integral screw covers
- Felted gasket for increased performance
- When specified correctly complies with Building Regulations



Product	Product Code	(L) Length	(W) Width	(P) Projection Closed-Open	EA (mm ²)	Free Area (mm ²)	Slot Detail / Free Area of Slot (mm ²)
TV90 HL 4300EA 425 vent	TA631	425	22	17 - 27	4300	4184	387
HF 441 canopy	TA6054	441	24	36.5		6763	6137 16

EA figures above and marked on vents are achieved when fitted to manufacturer's recommendations.

Tested in accordance with BS:EN 13141-1 (2004).

This product does feature some protrusion into the slot. If the recommended slot size has been cut then the protrusion will not affect fitting or claimed performance.

Manufactured from

Aluminium 6063 HIT T6, component parts PVCu, POM & PP (UV Stable)

Recommended screws

3.5mm (No.6) Round Head or equivalent

Standards

Tested in accordance with BS EN 13141-1:2004 (airflow, air leakage and weather tightness)

Acoustic performance tested in accordance with BS EN ISO20140-10:1992, BS EN ISO140-10:1991 and single figures to BS EN ISO717-1:1991

Performance

(Full test details available on request)

Equivalent Area – See above

Free Area – See above

Air Leakage (m³/hr @ 50Pa) – 1.09 (4300EA version)

Water Resistance (Pa) – 600

Acoustic D_{n,e,w} (+/-) – vent open 31 (0;1), vent closed 42 (-1;-2)

Finishes

Suffix product code with:

-020 (white), -001 (SAA) (Canopy -026), -023 (brown)

Other colour options available. Please contact sales for details.

More information

enquiries@titon.co.uk / 01206 713801



Through sash