



Locking Brighton Fastener Fitting



These instructions have been supplied as a guide only and we cannot take any responsibility for problems which may arise during the fitting of the Locking Brighton Fastener. The Lockable Brighton Fastener is slightly harder to fit compared to the Non- Locking version of the Brighton Fastener which needs no real positioning as the Keep can be placed anywhere along the length of the Arm of the Fastener.

Here are step by step instructions on how to fit the Locking version.

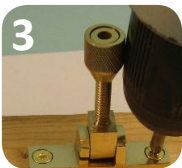
Position the Fastener onto the window and decide if you require one or two Fasteners, place the Fastener on the Meeting Rail (Where the Top Sash meets the Bottom Sash) and position it.



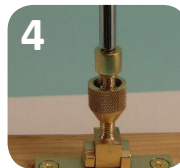
1 When you are happy with the position of the Fastener, making sure the Fastener is in line with the edge of the Sash, mark out the screw holes.



2 Drill out the pilot hole, remove any sawdust.



3 Fasten down the screws.



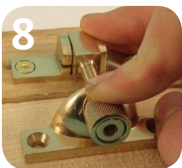
4 Move the Collar down the Arm of the Fastener for the moment and tighten the Lockable Cap until the key will not turn anymore (make sure you do not over tighten or you may damage the Cap).



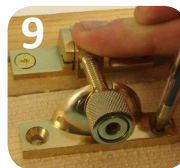
6 Tighten the collar so it is right up against the back of the Locking Cap.



7 This is how the Fastener will look when the Cap is locked and the Collar is up tight to the back of the Cap.



8 Push the Arm of the Fastener down, place the Keep tight up behind the Collar, so the Collar fits snug into the U of the Keep, making sure the Keep is in a central position and square to the Arm.



9 While in this position, mark out the screw holes.



10 Drill out the pilot holes, remove any



11 Fasten down the screws.



12 Un-tighten the Cap (you will be able to slacken off the Cap without taking it off the Arm of the Fastener so not to lose it).



13 Un-tighten the Collar, this will now allow the Arm to come out of the U



14 The Fastener should now open and close, to re-lock the Fastener, place the Arm of the Fastener into the closed position into Keep and turn the Collar into the U of the Keep then tighten the Cap into the Collar.