



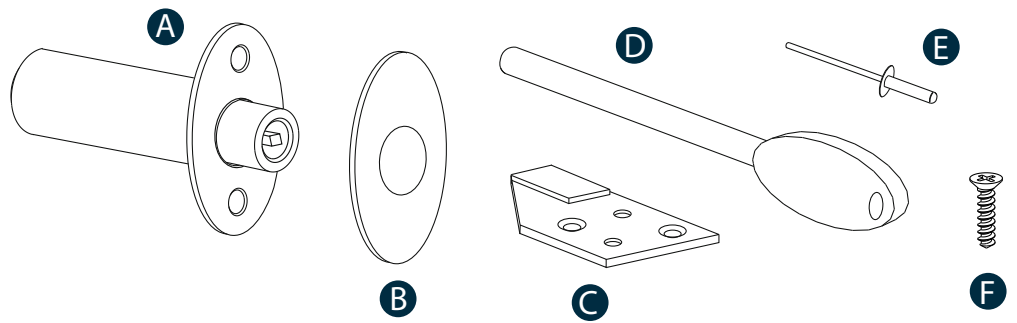
Locking Ventlock for PVCu

Installation Instructions

The Locking Ventlock is easily fitted. Please read the instructions carefully before installation. We recommend fitting two Locking Ventlock per sash.

Parts List

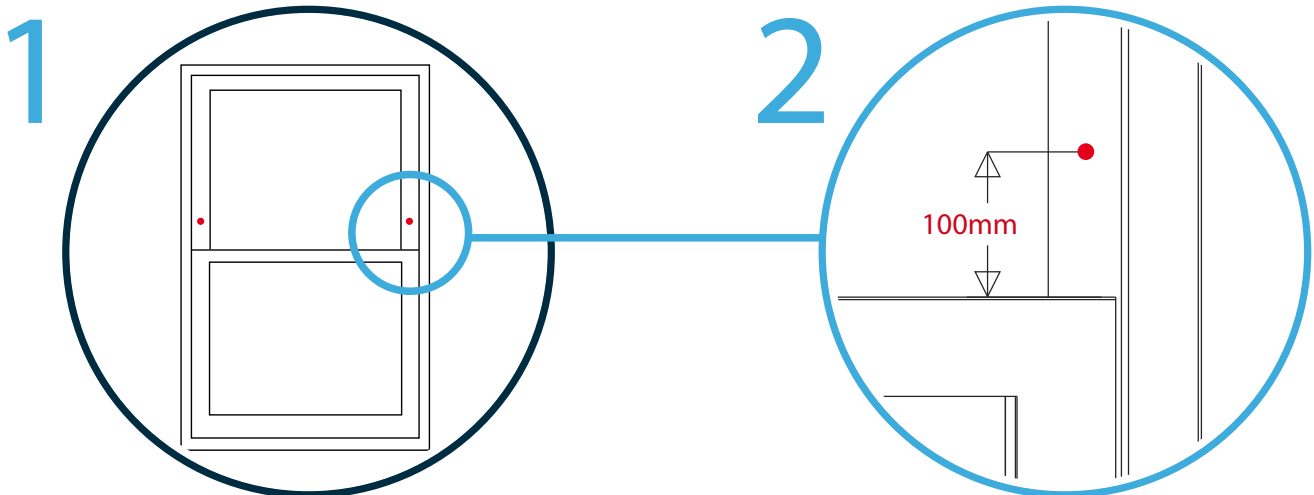
- A 1 x Locking Ventlock
- B 1 x Face Plates
- C 1 x Strike Plate
- D 1 x Key
- E 2 x Rivet
- F 2 x Self Drilling Screws



Important: Consideration should be given before fitting to Egress windows. Locking Ventlock projects 10mm when fully out. This device must be fitted in a position that allows no more than a 100mm restricted opening. This product requires riveting in position.

Ensure the sash is completely closed and locked before starting the installation.

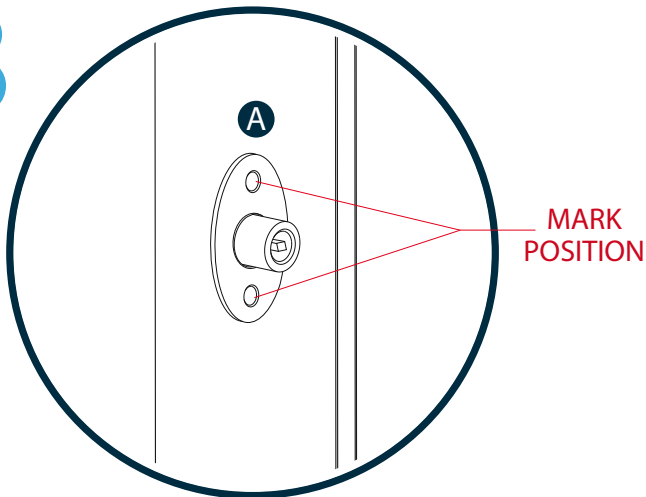
Installation



Important!
Close and lock sash before starting installation.
Measure 100mm up from top of bottom sash and mark window frame as shown above.

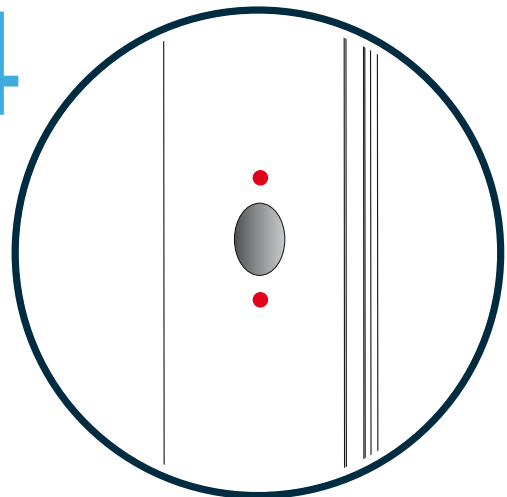
Drill a 12mm diameter hole 30mm deep into the top sash as shown above.

3



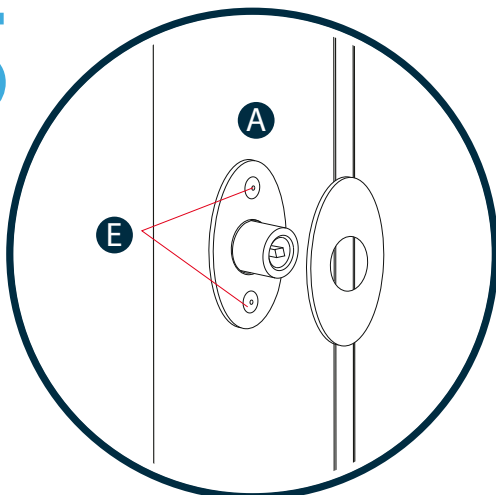
Insert the Locking Ventlock (A) into the hole and align in a vertical position. Mark the sash through the two fixing holes.

4



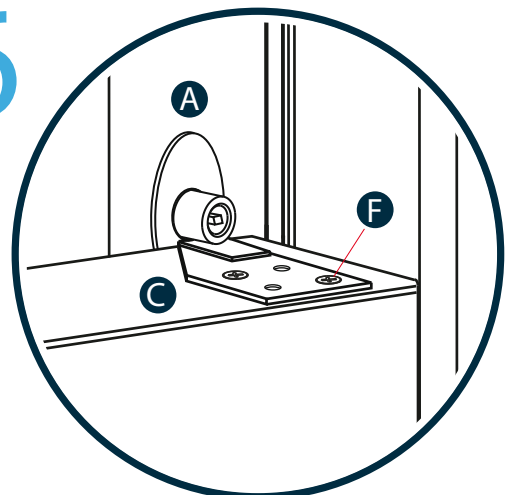
Drill two 3mm diameter holes 15mm deep into the top sash as shown above.

5



Install the Locking Ventlock (A) onto the top sash using the Rivets (E) provided. Attach the appropriate Face Plate (B) onto the Locking Ventlock (A).

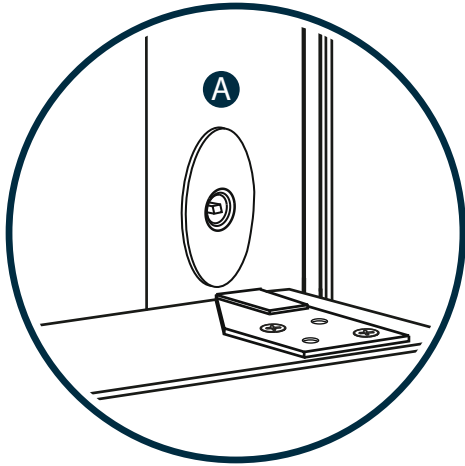
6



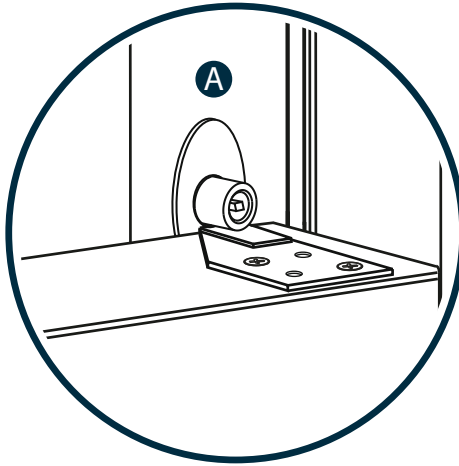
Lower the sash and install the Strike Plate (C) where Locking Ventlock (A) meets the meeting rail using the Screws (F) provided.

Operation

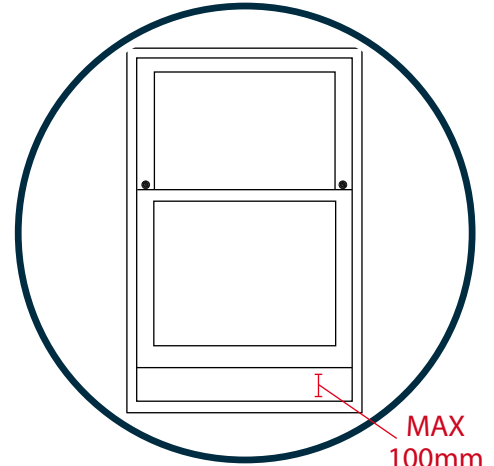
Verify device operates correctly and window opening cannot exceed 100mm.



De-activate Locking Ventlock (A) using the Key (D) provided.



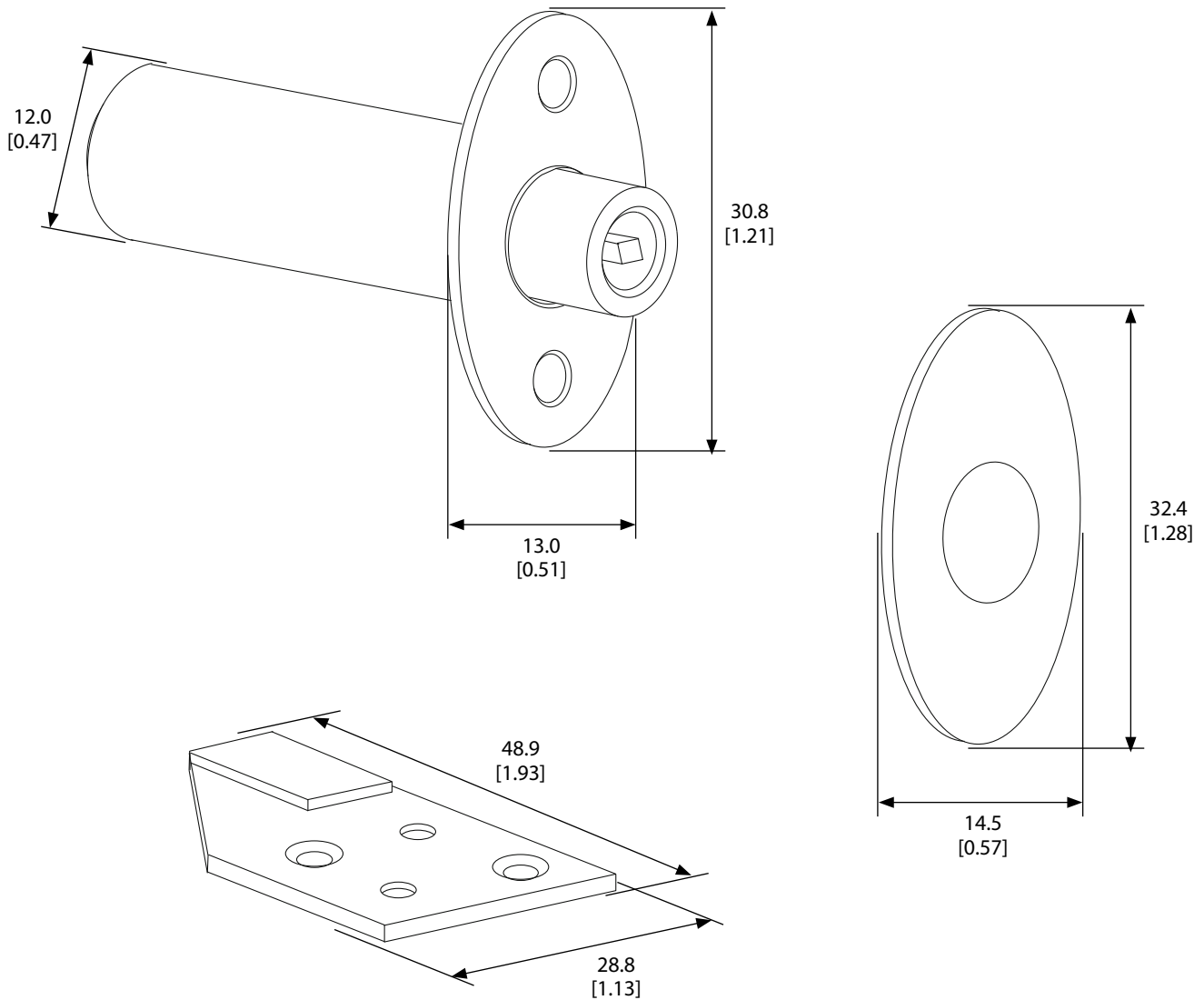
Activate Locking Ventlock (A) using the Key (D) provided.



The window opening cannot exceed 100mm.

Clean the Locking Ventlock with a damp cloth. On a regular basis, ensure the device operates correctly. Window opening control device installation is now complete.

Technical Specification



Important: Consideration should be given before fitting to Egress windows. Locking Ventlock projects 10mm when fully out.

This device must be fitted in a position that allows no more than a 100mm restricted opening.